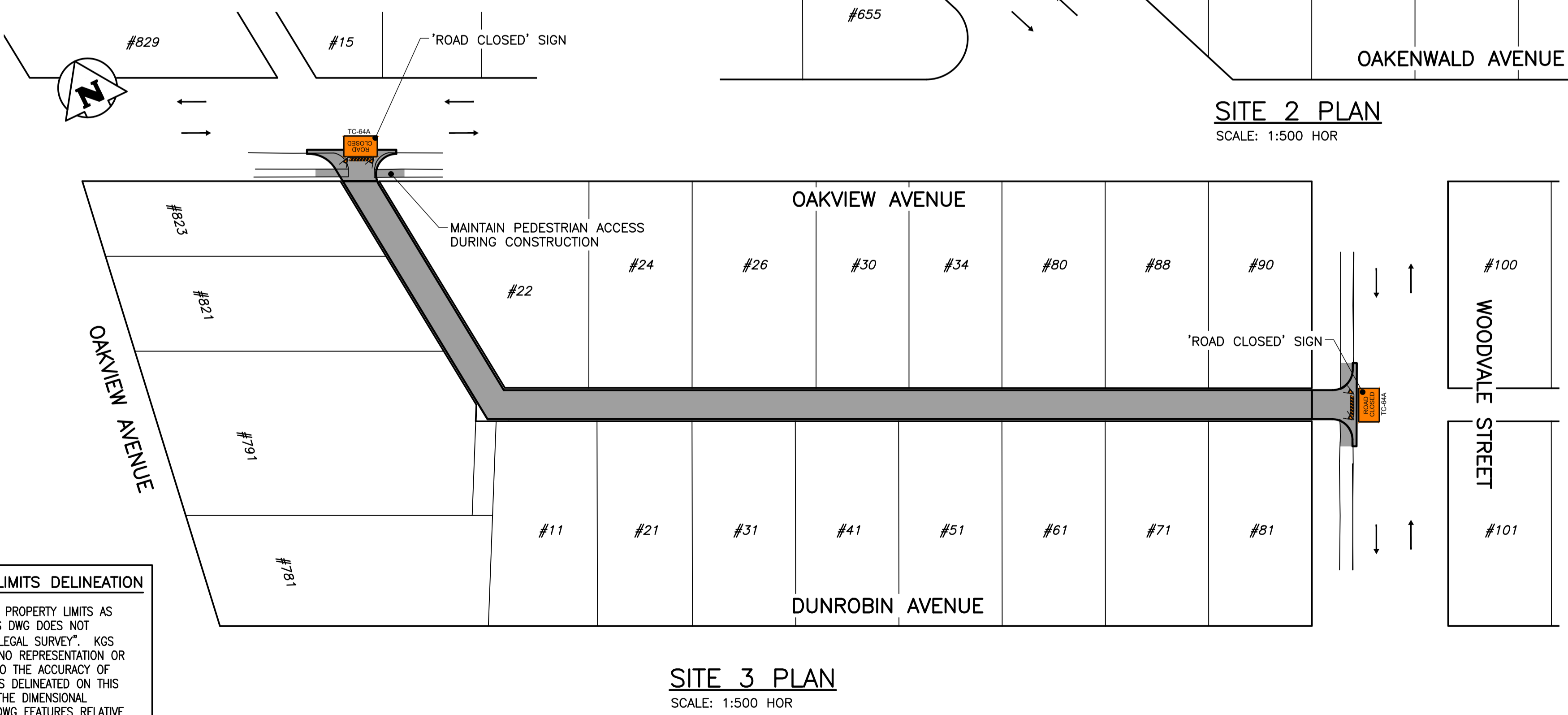
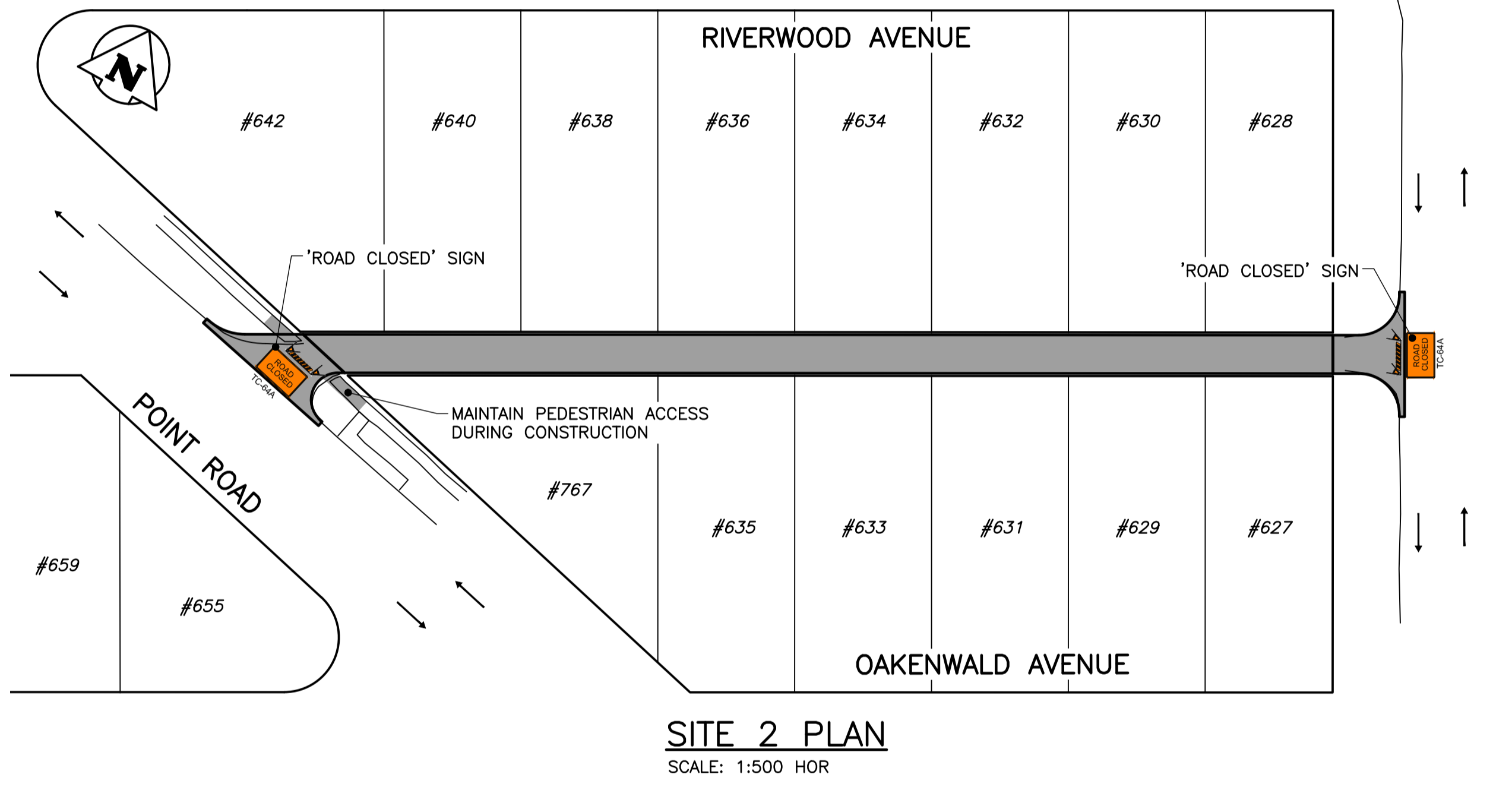
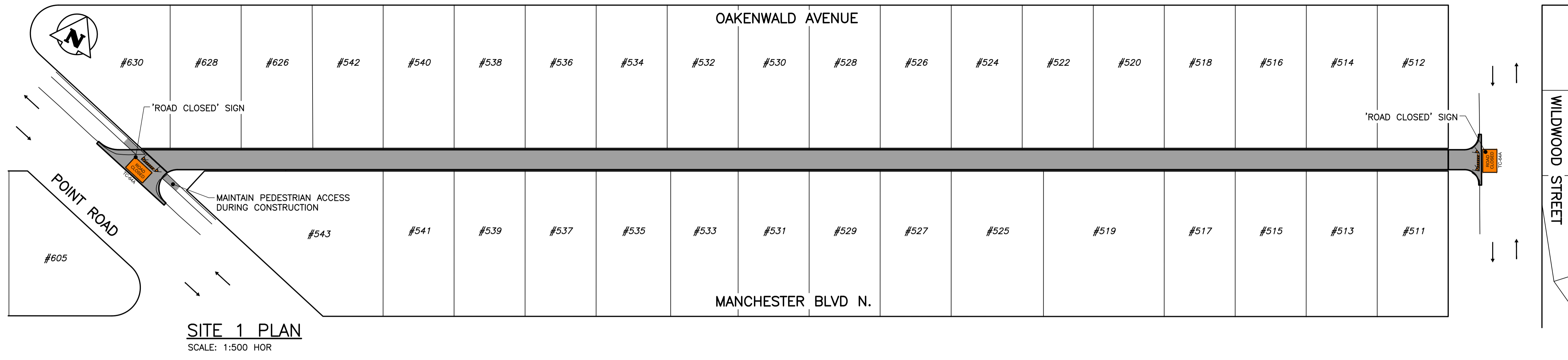


APPENDIX 'B'

PHASING & SIGNAGE PLAN



- GENERAL NOTES:**
1. ALL TEMPORARY TRAFFIC CONTROL TO BE IN ACCORDANCE WITH THE LATEST MANUAL OF TEMPORARY TRAFFIC CONTROL ON CITY STREETS (MTTC) AT TENDER.
 2. PERFORM WORK TO MINIMIZE IMPACT TO TRAFFIC FLOW AND ACCESS TO RESIDENCES.
 3. NOT ALL REQUIRED SIGNAGE IS SHOWN. ADDITIONAL SIGNAGE TO BE PROVIDED IN ACCORDANCE WITH THE MTTC.
 4. CONTRACTOR SHALL SUBMIT THE PEDESTRIAN ACCESSIBILITY PLAN FOR REVIEW & ACCEPTANCE BY THE CONTRACT ADMINISTRATOR.
 5. CONTRACTOR SHALL BE RESPONSIBLE FOR ALL PERMITS, THE SUPPLY, PLACEMENT & MAINTENANCE OF ALL TEMPORARY TRAFFIC CONTROL SIGNAGE IN ACCORDANCE WITH THE TENDER.
 6. ALL LANE CLOSURE REQUESTS MUST BE SUBMITTED THROUGH THE CONTRACT ADMINISTRATOR & ARE SUBJECT TO THE APPROVAL OF THE TRAFFIC MANAGEMENT BRANCH.
 7. CONTRACTOR TO PROVIDE FLAGPERSONS IN ACCORDANCE WITH THE MTTC WHEN MOVING MATERIALS OR EQUIPMENT INTO OR OUT OF TRAFFIC.
 8. CONTRACTOR SHALL PROVIDE FLAGPERSONS DURING ALL ASPHALT PLACEMENT AT THE PROJECT LIMITS TO MINIMIZE IMPACT TO TRAFFIC.
 9. WHEN FLAGPERSONS ARE PRESENT, FLAGPERSON SIGNAGE MUST BE PLACED IN ACCORDANCE WITH THE MTTC.
 10. WHEN FLAGPERSONS ARE NOT PRESENT, THE FLAGPERSON SIGNAGE MUST BE REMOVED OR HIDDEN.
 11. PROVIDE TEMPORARY RAMPS & CROSSING WHERE DIRECTED BY CONTRACT ADMINISTRATOR & IN ACCORDANCE WITH THE ACCESSIBILITY PLAN FOR PEDESTRIAN CROSSINGS WHILE PERFORMING WORK IN THE INTERSECTIONS AND APPROACHES.
 12. WHERE A LANE IS REQUIRED TO BE CLOSED ON MAJOR INTERSECTING STREETS PERFORM THE WORK ON THE TIE-IN DURING OFF PEAK-HOURS.
 13. CONTRACTOR TO MONITOR & MAINTAIN THE TEMPORARY SIGNAGE FOR THE DURATION OF THE PROJECT & MODIFY AS NEEDED FOR EACH STAGE OF THE WORKS.
 14. CONTRACTOR TO REMEDY ANY SIGNAGE DEEMED INSUFFICIENT OR INCORRECT AS DIRECTED BY THE CONTRACT ADMINISTRATOR OR TRAFFIC MANAGEMENT.
 15. STAGE SIDEWALK WORK SUCH THAT PEDESTRIAN ACCESS IS MAINTAINED.
 16. PROVIDE ADVANCED CONSTRUCTION & SIDEWALK CLOSED/DETOUR SIGNAGE IN ACCORDANCE WITH THE MTTC. PROVIDE SMALL CONES IN CENTRE WHERE BARRICADES. GUIDE PEDESTRIANS THROUGH THE CONSTRUCTION ZONE.

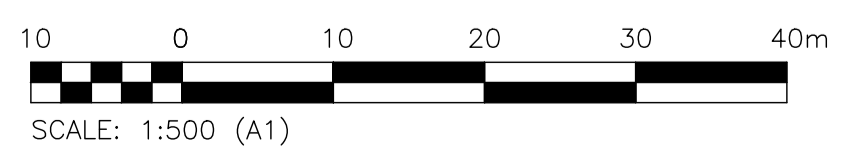
PROPERTY LIMITS DELINEATION

DELINEATION OF PROPERTY LIMITS AS SHOWN ON THIS DWG DOES NOT REPRESENT A "LEGAL SURVEY". KGS GROUP MAKES NO REPRESENTATION OR WARRANTY AS TO THE ACCURACY OF PROPERTY LIMITS DELINEATED ON THIS DWG, NOR ON THE DIMENSIONAL ACCURACY OF DWG FEATURES RELATIVE TO THOSE PROPERTY LIMITS.

METRIC

WHOLE NUMBERS INDICATE MILLIMETRES
DECIMALIZED NUMBERS INDICATE METRES

ISSUED FOR TENDER
NOT TO BE USED FOR CONSTRUCTION



NO.	REVISIONS	DATE	BY
0	ISSUED FOR TENDER	2024/07/30	CR

TENDER NO. 641-2024

THE CITY OF WINNIPEG
PUBLIC WORKS DEPARTMENT
ENGINEERING DIVISION

KGS GROUP

PROJECT TITLE
2024 LOCAL IMPROVEMENT ALLEYS PROGRAM

SIGNAGE PLAN

SHEET 1 OF 1
COMPUTER FILE NAME 23-0107-18
FIGURE F-1000

Filepath: U:\FMS\23_0107_018_23-0107-018_CSS.01_641-2024_F-1000 - TabF-1000 Plotted By: MClues 24/07/30 [Tue 11:57am]
 A1 (24/07/30) / PLOT SCALE: 1:1